

Each winter, homeowners are confronted with the inconvenience and expense of frozen water pipes.

Whether you're a year-round or seasonal resident, this guide will teach you some simple precautions you can take to protect your home from winter water emergencies!

Arizona Water Company (AWC) defines water conservation as the practice of using water efficiently to reduce unnecessary water usage. We believe all water should be used as efficiently as possible regardless of the source of supply or the type of use. By increasing conservation efforts, we can all become better stewards of water.

To be most effective, water conservation is a community effort – we all have to do our part, utility included. This is why AWC's water conservation programs are instead called Integrated Demand Management Programs. This naming emphasizes that utility and customers should both conserve water and work collaboratively to build the best conservation programs.



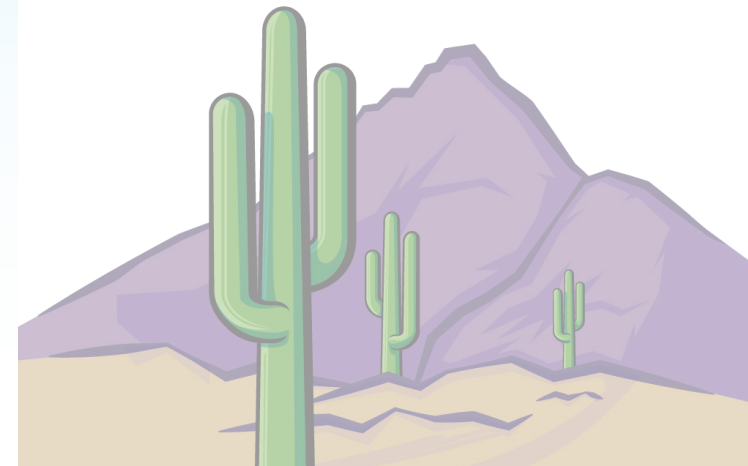
Scan the QR code above or visit azwater.com/conservation to learn more!

Arizona Water Company

***www.AZWater.com
savewater@azwater.com
(602) 240-6860***

***DON'T LET
COLD WEATHER
CATCH YOU BY
SURPRISE...***

***WINTERIZE
YOUR HOME!***



TIPS FOR EVERYONE

Disconnect and drain your outdoor water system.

1. Disconnect and store hoses and run hose bibs to drain them to prevent overnight freezes that can burst both faucets and the pipes they're connected to.
2. Disconnect and drain your garden hoses and irrigation systems.

Insulate pipes or faucets in unheated areas.

1. Hardware or building supply stores sell pipe heating and insulation materials. Wrap all exposed outdoor pipes and faucets as well as indoor pipes and faucets in commonly unheated areas like attics, basements, garages, and crawl spaces.
 - You may also want to consider installing heat tape or heat cable on your indoor pipes and faucets prior to wrapping them. If you do, make sure that you use UL-listed products only and follow the manufacturer's instructions carefully.

Seal off access doors, air...

... vents, and cracks.

1. Winter winds whistling through overlooked openings can quickly freeze exposed water pipes. However, leave air vents that support your furnace or water heater combustion unsealed.

Locate your main shutoff valve.

1. Look for your main shutoff valve where the water line comes into your house from the street. If you don't find it there, check near the water heater or washing machine. If a pipe bursts anywhere in the house, this valve turns it off – so paint it a bright color or hang a tag on it and make sure everyone in the house knows where it is and what it does.

TIPS FOR SEASONAL RESIDENTS

Leaving for the winter? Make sure to implement these additional tips before you go!

Disconnect and drain your indoor water system.

1. Turn off the water supply at the main shutoff. Then, run each of the

showerheads and faucets and flush each of the toilets, starting at the highest point in your home and working your way down to the lowest point.

Turn off and drain your water heater.

1. Since the water will be off while you're gone, you can also turn off gas or electricity to your water heater and drain it to save energy – make sure to follow the manufacturer's instructions carefully.

For general water use and conservation questions, email the Arizona Water Company Water Conservation Team at savewater@azwater.com or call your local division office.

For division office locations, hours, and contact information, visit: www.azwater.com/communities/community-map/

